

FOR LEASE

300

WEST PRATT

A HISTORIC BUILDING



CUSHMAN &  
WAKEFIELD

VALSTONE  
PARTNERS

# 5-STORY, 61,655 SF CLASS A OFFICE BUILDING



[VIEW TESTIMONIAL](#)

**2** SUITE 210  
1,090 SF

SUITE 250  
1,797 SF

**3** SUITE 350  
3,375 SF

**5** SUITE 500  
7,782 SF

**4** SUITE 450  
10,755 SF  
Available 4/1/21

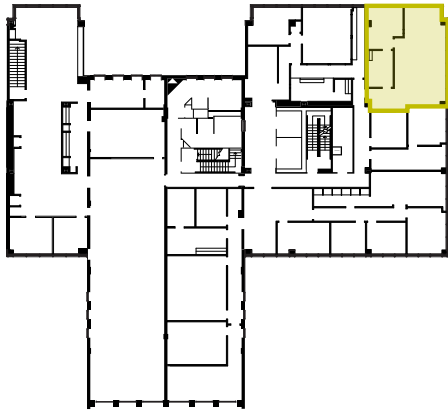


**SECURE**  
ACCESS

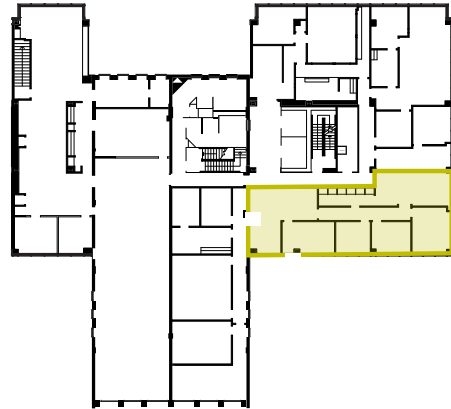
**VERIZON**  
FIOS AVAILABLE

**ON-SITE**  
MANAGEMENT

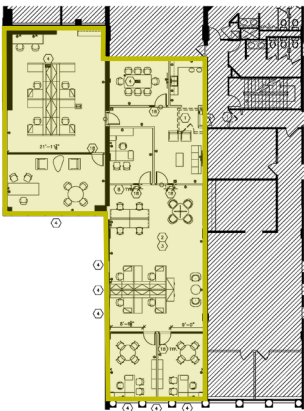
SUITE 210  
1,090 SF



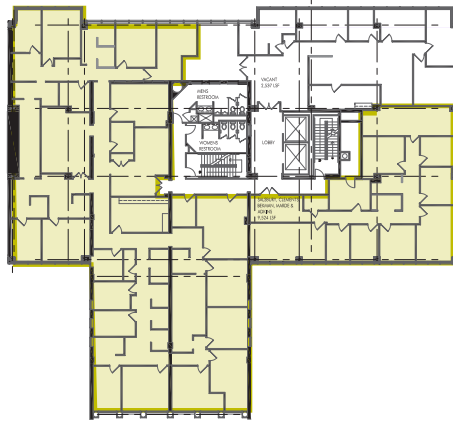
SUITE 250  
1,797 SF



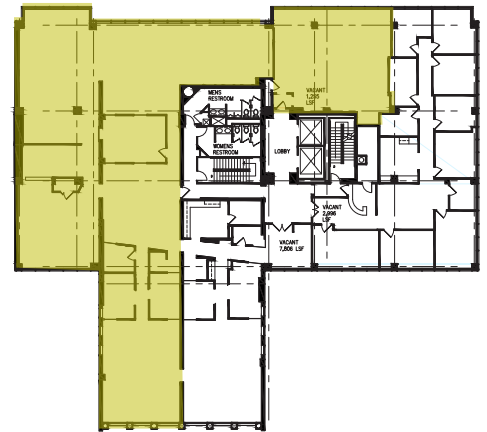
SUITE 350  
3,375 SF



SUITE 450  
10,755 SF - AVAIL 4/1/21



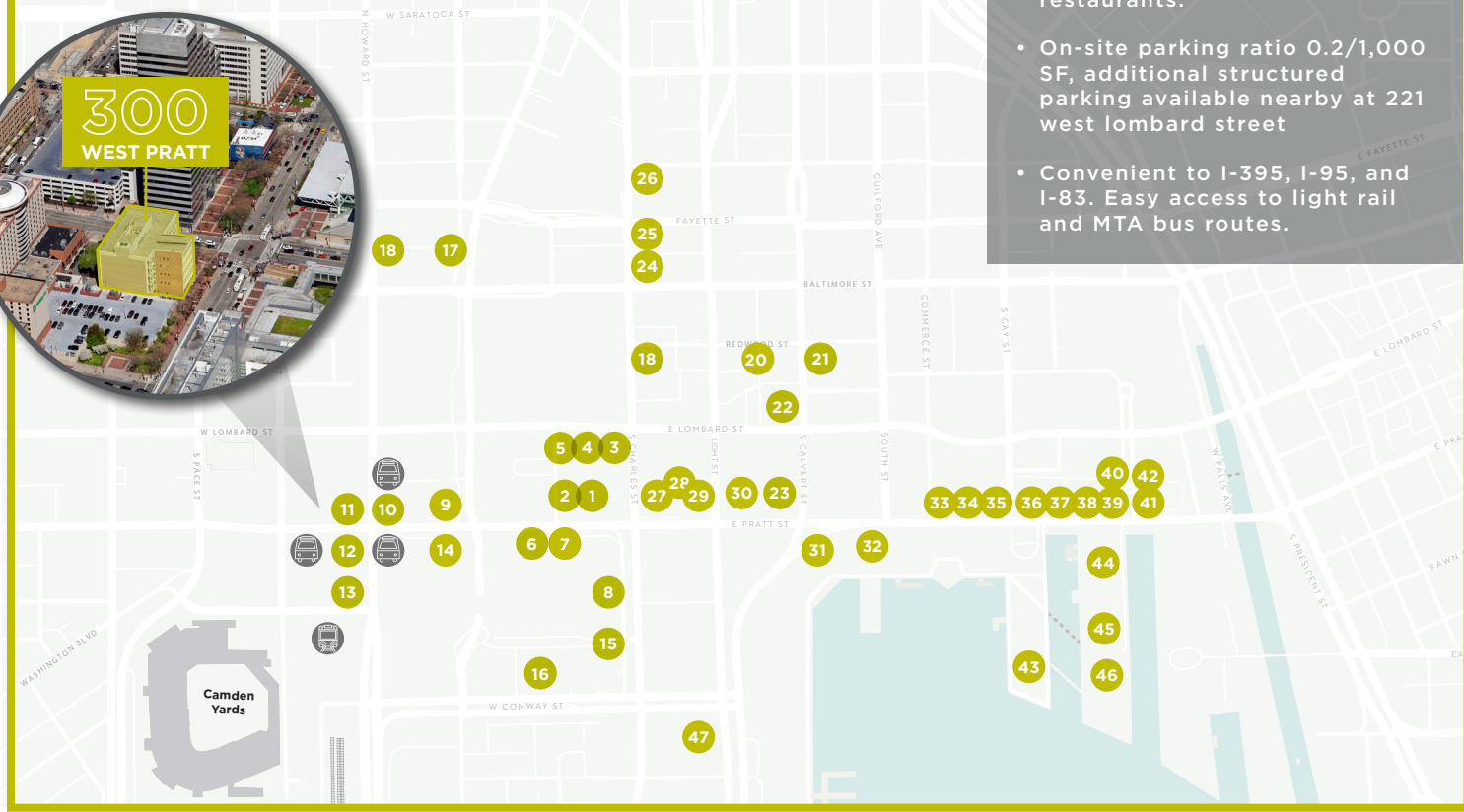
SUITE 500  
7,782 SF



# LOCATED IN A HUB ZONE AND AN OPPORTUNITY ZONE



- Located on the Pratt Street corridor, just steps away from the Baltimore Convention Center, Oriole Park at Camden Yards, and numerous hotels and restaurants.
- On-site parking ratio 0.2/1,000 SF, additional structured parking available nearby at 221 west lombard street
- Convenient to I-395, I-95, and I-83. Easy access to light rail and MTA bus routes.



1. Cosi
2. Chef Paolino Cafe
3. Bank of America
4. Congentra Urgent Care
5. Planet Fitness
6. Kona Grille
7. Fillicori Zecchini
8. Sullivan's Steak House
9. Pratt Street Ale House
10. Starbucks
11. Chipotle
12. Jimmy Johns
13. Diamond Tavern
14. The Baltimore Convention Center
15. Hyatt Regency
16. Sheraton Inn

17. Hotel Monaco + B&O Brassiere
18. Lord Baltimore Hotel + LB SkyBar
19. Delta Hotel + TellTale Restaurant
20. Hampton Inn Suites
21. Hotel RL + Victrola Coffee Roasters
22. Brookshire Suites
23. Renaissance Hotel
24. Dunkin Donuts
25. Potbelly Sandwich Shop
26. David and Dad's Café
27. Jos. A Bank
28. Starbucks
29. Brio Tuscan Grille
30. The Gallery at Harborplace
31. M&S Grille
32. Cheesecake Factory

33. Shake Shack
34. Chick Fil A
35. CVS
36. Corner Bakery
37. Capital Grille
38. Marshall's
39. Fogo de Chao
40. Blaze Pizza
41. Blackwall Hitch
42. Bon Fresco
43. The National Aquarium
44. Phillip's Seafood
45. Barnes & Noble
46. Potbelly Sandwich Shop
47. 414 Light Street Apartments



**STUART RIENHOFF**  
 Senior Director  
 +1 410 685 9245  
 stuart.rienhoff@cushwake.com

**MATT MELNICK**  
 Senior Director  
 +1 410 685 9880  
 matthew.melnick@cushwake.com

**CUSHMAN & WAKEFIELD**  
 One East Pratt Street, Suite 700  
 Baltimore, MD 21202  
 cushmanwakefield.com